

ULE 614

Quick Start Guide - Update to JavaScript Firmware





Copyright notices

© Telefonbau Arthur Schwabe GmbH & Co. KG 2020. Any disclosure as well as duplication of this document, utilisation and communication of its content, are prohibited unless explicitly permitted. Violations render the offender liable to damages. All rights reserved in the event of patent or utility model registration.

Revisions

The content in this guide is for your information and can be changed without prior notice. When compiling this document, great care was attached to ensuring that the published information is correct. However, TAS accepts no liability for incorrect or missing information in this document or for the use of the information contained therein. TAS reserves the right to revise or rework the product design or the product manual without reservation. TAS is not obliged to draw attention to such changes or revisions.

Licences and trademarks

Unless otherwise indicated, all trademarks mentioned are legally protected trademarks of Telefonbau Arthur Schwabe GmbH & Co. KG. Microsoft, Windows and the Windows logo are trademarks of Microsoft Corporation in the USA and/or other countries. AVM and FRTIZ! and the AVM logo are trademarks of AVM GmbH. Other brand or product names not expressly mentioned herein are trademarks or registered trademarks of their respective owners.



Telefonbau Arthur Schwabe GmbH & Co. KG
Langmaar 25
D-41238 Mönchengladbach

Manual version: 12/20



General information

Safety information

In order to ensure a safe working environment, it is essential to always comply with all specified safety and handling instructions. Furthermore, all local accident prevention regulations and safety regulations applicable to the area of use of the device must be observed.

All relevant materials used must be used properly according to the respective specifications.

Maintenance

Maintenance must be carried out according to the German VDE (Association for Electrical, Electronic & Information Technologies) Directive 0833. For details, see the chapter Maintenance.

Disposal

The device is subject to the WEEE Directive (EU 2012/19/EU). You are required by law to dispose of the device separately from household waste at the end of its service life.

ESD note

Caution! The modules contain components at risk of charging. Assembly work on the device must only be carried out when the operating voltage is disconnected. Before and during assembly work on the device, make sure the operator is earthed in order to prevent damage to the device.



Symbols used

The information symbol indicates useful information and tips and recommendations.



The attention symbol refers to very important information and instructions which, if ignored, may result in very high costs, damage to property or, in the worst case, personal injury.



Table of Contents

1	Preface	5
1.1	Preparation	5
2	TAS Loader Plus	5
2.1	Loading via the TAS-Loader Plus	5

1 Preface

1.1 Preparation

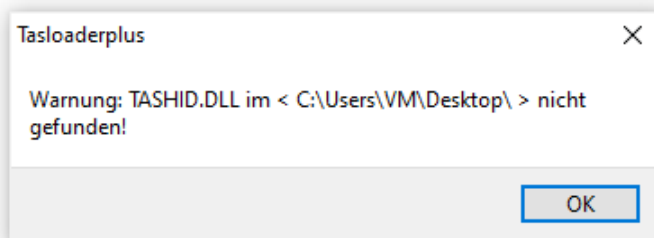
Due to the discontinuation of Adobe Flash Player at the end of 2020, the ULE 614(z) firmware must be converted to JavaScript. In order to load and use this firmware, you need the TAS-Loader Plus developed by TAS. This tool, as well as the current firmware, can be downloaded free of charge at <https://www.tas.de/produkte-services/alarmanagement-leitstandstechnik/voice-over-ip-gateway>. Alternatively, you can also contact a TAS employee. Please contact us here at +49 2166 858-228 or by email ULE@tas.de.

2 TAS Loader Plus

2.1 Loading via the TAS-Loader Plus



Unzip the ZIP files and run the TASLoaderPlus.exe.



The TASHID.dll must be located in the same directory as the TASLoaderPlus.exe. If this is not the case, an error message will be displayed.



Now click on the HID button after opening the TASLoaderPlus.exe.



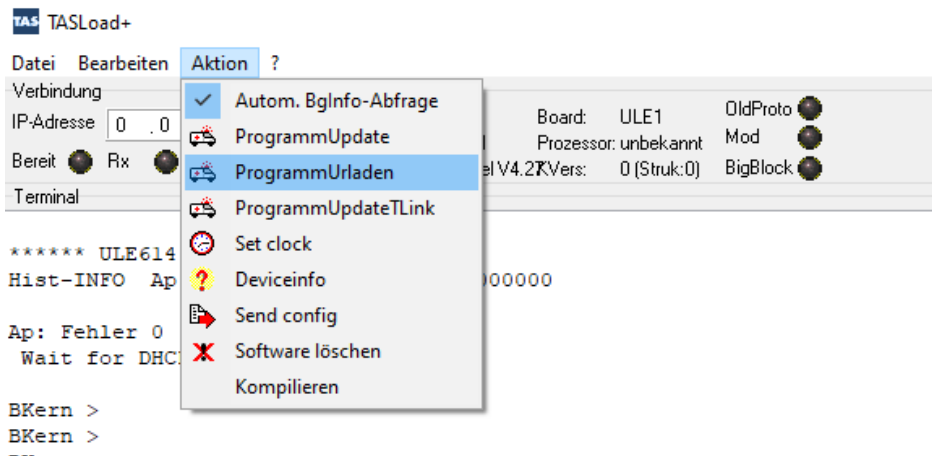
Now connect the ULE 614(z) to your PC using a USB type Mini-B cable.



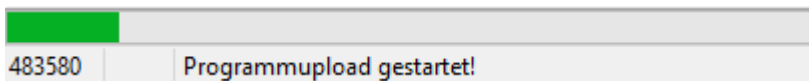
Press the reset button marked R **continuously**. The best way to do this is with a pointed object, such as a ballpoint pen or paper clip. To supply the ULE with power via PoE and to initiate the start-up process, the network cable must be plugged into the LAN socket. Wait until the ULE614 boots up in the boot kernel (you can see this under "Baugruppeninfo" (Module info)). This can usually take up to 20 seconds.

```
Baugruppeninfo
Serienr.: 00474337   Board:  ULE1   OldProto ●
Produkt:  Nur Kernel   Prozessor: unbekannt   Mod ●
Hauptvers: Boot Kernel V4.27   Vers:  0 (Struk:0)   BigBlock ●
```

Under "Baugruppeninfo" (Module info), you should then see Boot Kernel V.4.27 or higher under "Hauptversion" (Main version). Now the ULE is in the boot kernel and ready to receive new data.



Now click on **Aktion > ProgrammUrladen** and select the ULE614(z) firmware file (Ule614ULE1.img).



The firmware is now loaded onto the ULE. This may take a moment.



When the operation is completed successfully, the following message is displayed. This can be confirmed with "Schliessen" (Close).

The ULE614(z) restarts after the loading process and is now accessible with the JavaScript interface. For more information, please refer to the user manual.



SICHERHEITS- UND
KOMMUNIKATIONSTECHNIK

Telefonbau Arthur Schwabe GmbH &
Co. KG Langmaar 25
41238 Mönchengladbach

Tel.: +49 2166 8580
Fax: +49 2166 858150

E-mail:
info@tas.de
www.tas.de